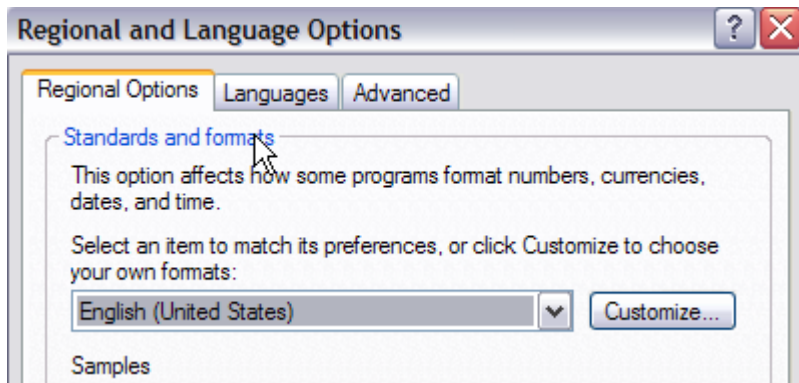


Your computer operating system must be set to **English – United States** in the **Regional and Language Options** folder. (Go to Start – Control Panel – Regional and Language Options) See below.

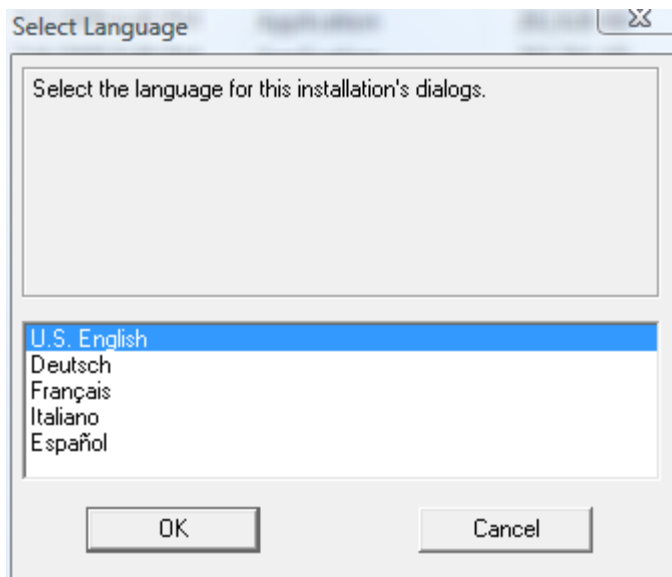


Also, you are required to have administrative rights to your PC to install and run Matrix.

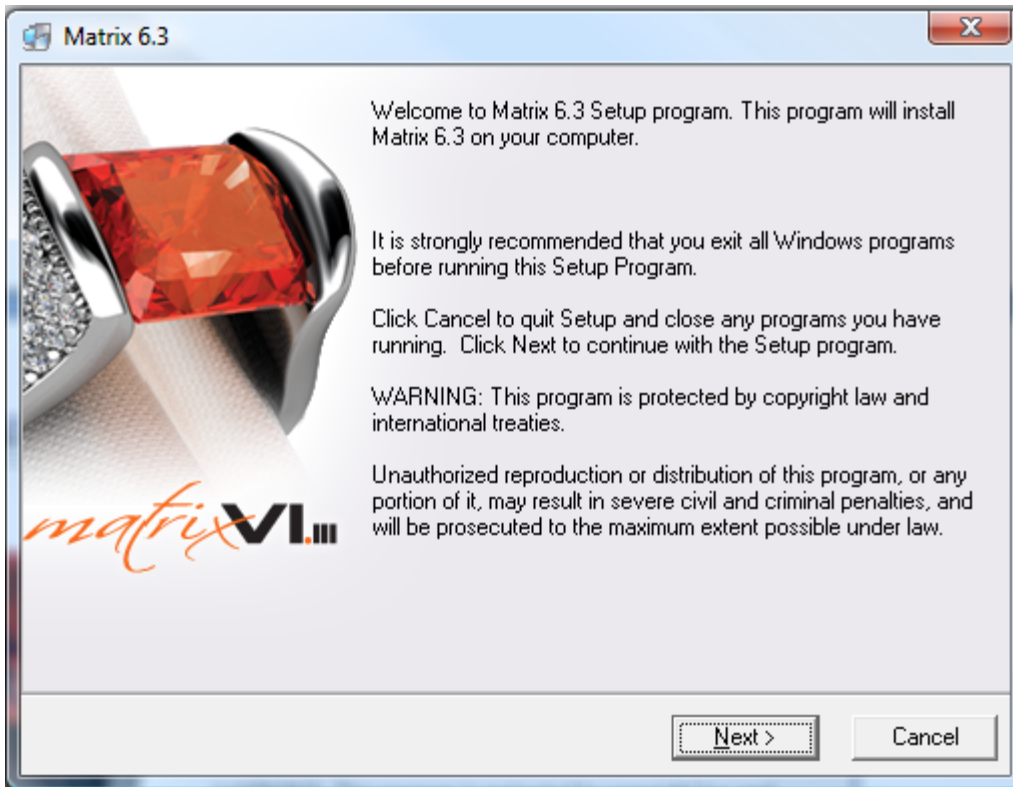
## Install Matrix 6.3 UPGRADE

1. Exit all Windows programs and click on **Install Matrix 6.3 Update** on the Matrix 6.3 DVD Install Menu.

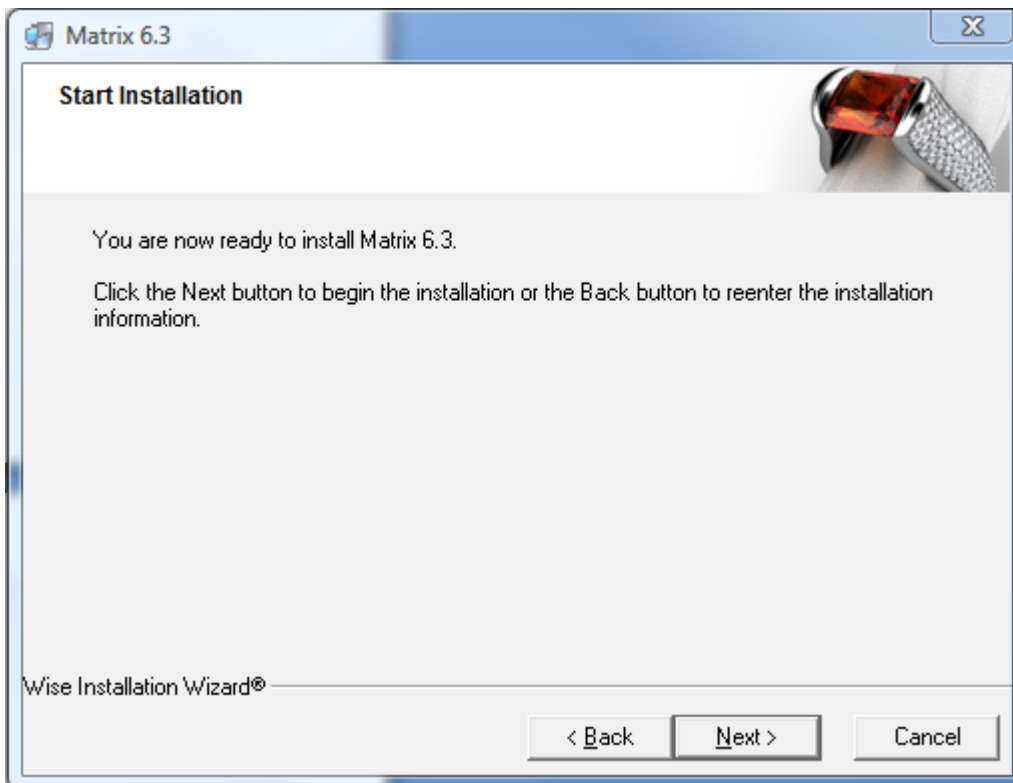
Choose your language and click **OK**.



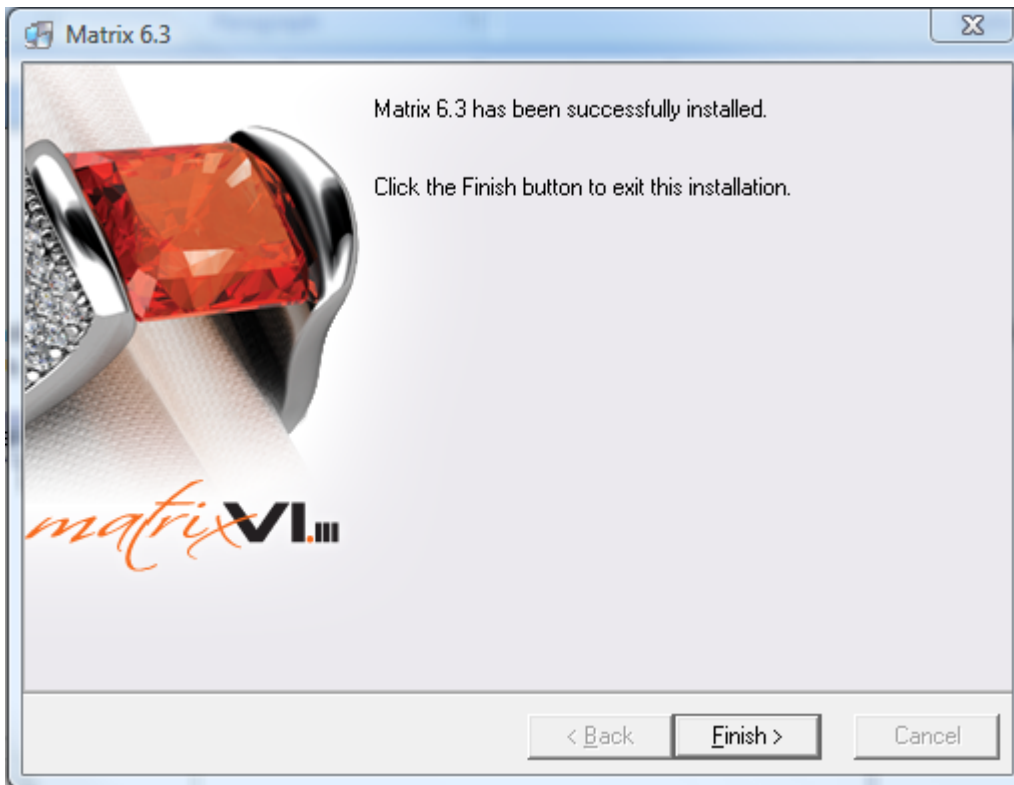
Click on **Next** to continue.



2. Begin the install by clicking **Next**.



3. Click **Finish** when the installation is complete.



## Windows Vista Considerations:

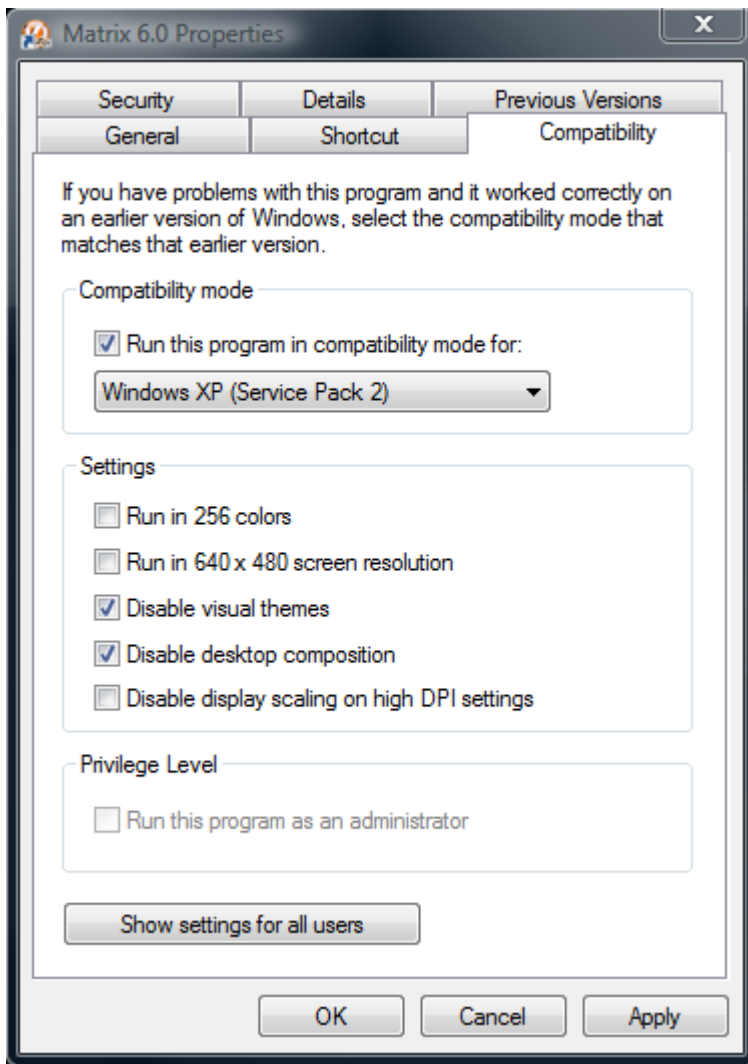
Matrix can run on Windows Vista with some hardware requirements and setting adjustments. Be sure that your Vista Operating System is **Vista Home Premium or greater**. (NO Vista Home Basic supported)

You must have a graphics card with **open – GL Vista drivers** available. Only newer **NVIDIA** brand cards currently meet these requirements. (Gemvision does NOT support ATI graphic cards on Vista)

If you have a Windows XP Operating System that runs well with the hardware you have, chances are you will not get the same results by upgrading to Windows Vista. So, we are recommending that you do NOT upgrade to Windows Vista at this time. However, if you're getting a new that's optimized for Vista, Matrix and Rhino should run great.

The **settings on your Vista System** must be as follows:

- 1) Right click on **Matrix 6 Icon** on your computer's desktop. Click on **Properties** and choose the tab marked **Compatibility**. Check the box named **Run this Program in Compatibility Mode for**. Then, choose **Windows XP Service Pack 2** in the drop down menu. Also, check the boxes named **Disable visual themes** and **Disable desktop composition**. At the bottom in the Privilege Level section check the box named **Run this Program as an Administrator** (this option is only available if UAC is turned on). Click on **Apply** and **OK** to close.



- 2) Right click on **Rhinoceros Icon** on your computer's desktop and repeat the exact same steps as the Rhino icon.

**Apple Macintosh:**

Gemvision does not support Matrix on Apple Macintosh computers.